

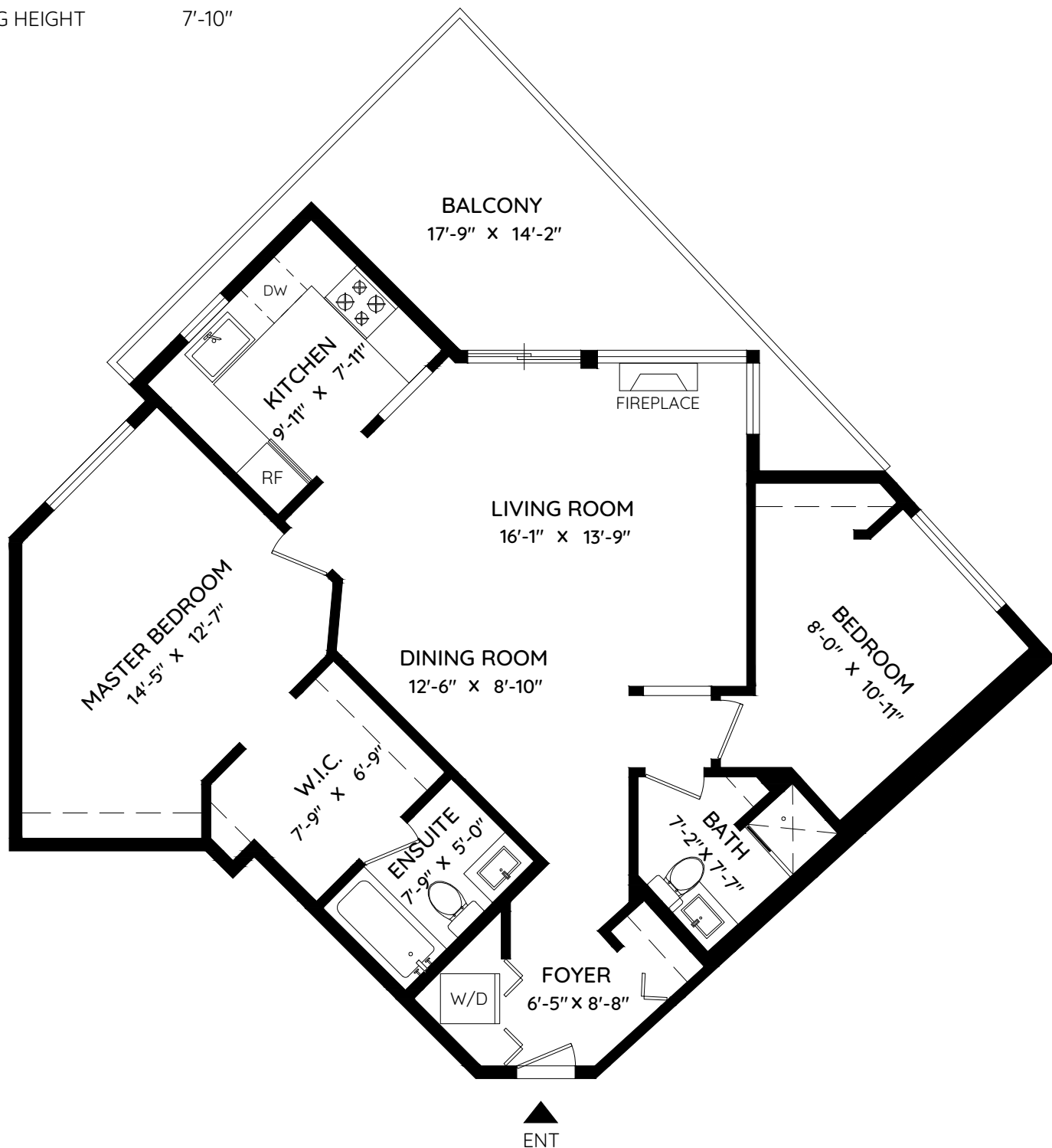
# 114 - 2429 HAWTHORNE AVENUE

PORT COQUITLAM, BC

LIVING AREA 967 SQ.FT.

BALCONY 185 SQ.FT.

CEILING HEIGHT 7'-10"



0 ft 3 ft 5 ft



The floor plan and the measurements are approximate within +/- 2% and are to be used for advertising usage only. May include unfinished area. Not suitable for architectural or construction. E&O Insured