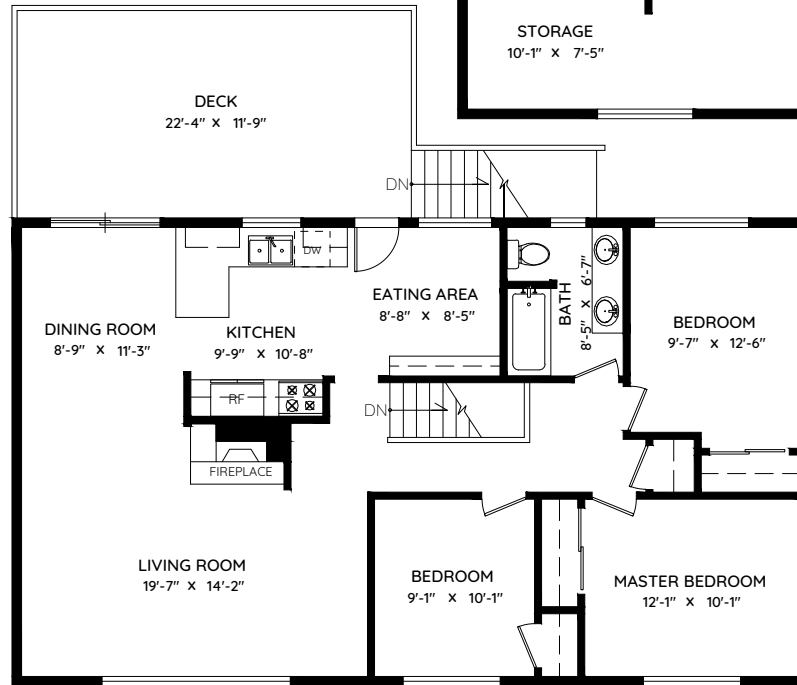
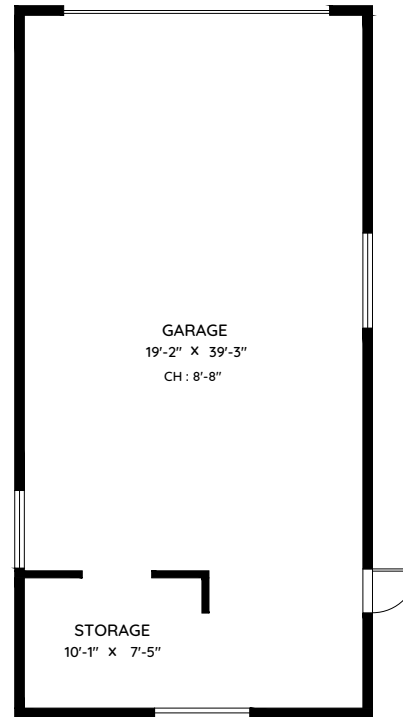


# 1661 FOSTER AVENUE

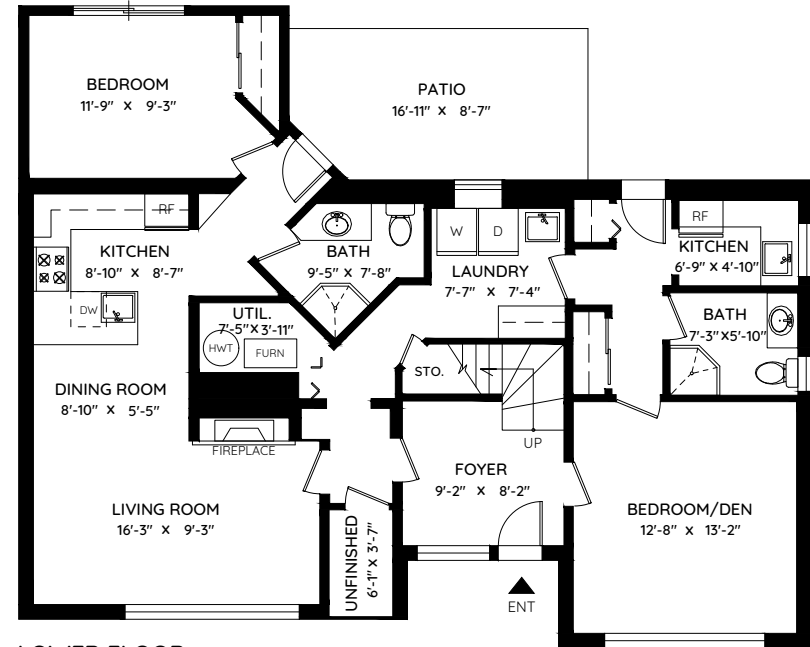
COQUITLAM, BC

MAIN	1,198 SQ.FT.
UPPER	1,252 SQ.FT.
<b>TOTAL</b>	<b>2,450 SQ.FT.</b>
UNFINISHED	25 SQ.FT.
<b>TOTAL AREA</b>	<b>25 SQ.FT.</b>

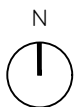
GARAGE/STORGE	818 SQ.FT.
DECK	318 SQ.FT.
PATIO	139 SQ.FT.
<b>TOTAL</b>	<b>1,275 SQ.FT.</b>



**MAIN FLOOR**  
1,198 SQ.FT.  
CH: 8'-0"



**LOWER FLOOR**  
1,252 SQ.FT.  
CH: 7'-7"



0 ft 3 ft 5 ft

The floor plan and the measurements are approximate within +/- 2% and are to be used for advertising usage only. May include unfinished area. Not suitable for architectural or construction. E&O Insured