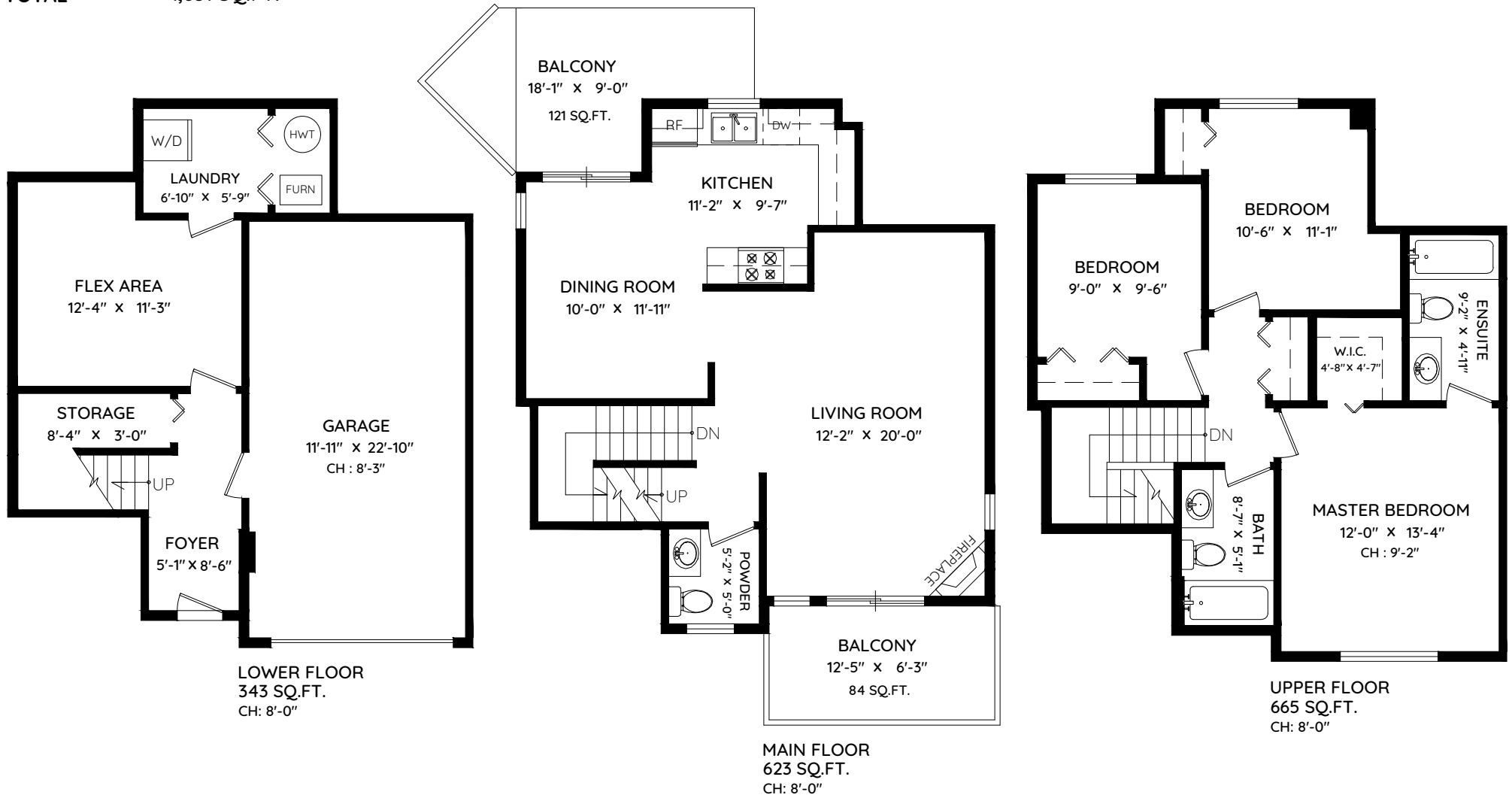


1120 BENNET DRIVE

PORT COQUITLAM, BC

MAIN	623 SQ.FT.	GARAGE	291 SQ.FT.
UPPER	665 SQ.FT.	BALCONY	205 SQ.FT.
LOWER	343 SQ.FT.	TOTAL	496 SQ.FT.
TOTAL	1,631 SQ.FT.		



0 ft 3 ft 5 ft



The floor plan and the measurements are approximate within +/- 2% and are to be used for advertising usage only. May include unfinished area. Not suitable for architectural or construction. E&O Insured